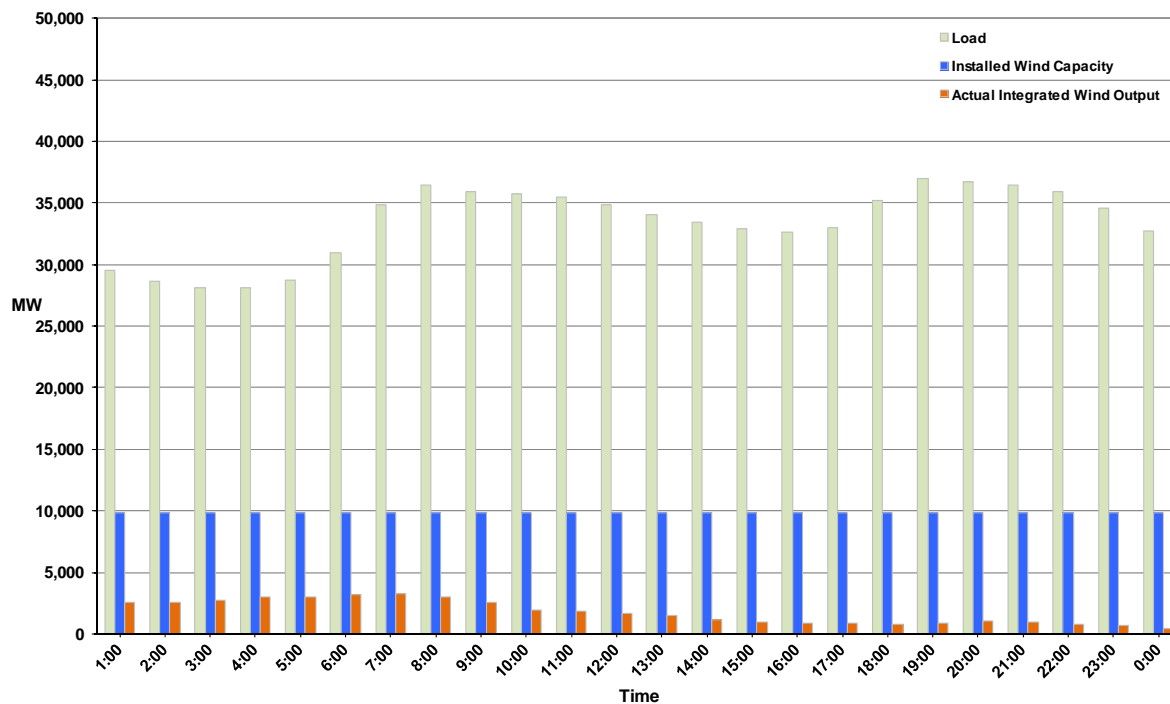




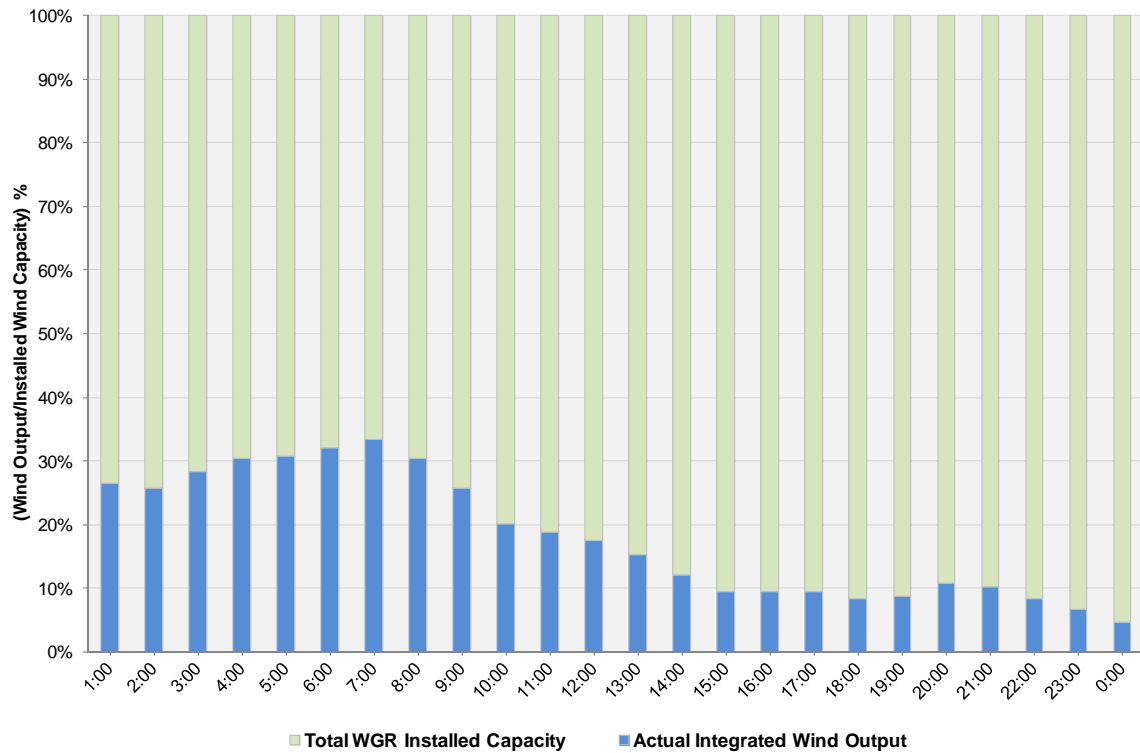
## ERCOT Grid Operations Wind Integration Report: 12/16/11

Peak Load	<b>36,963 MW</b>
Load Peak Hour	<b>19</b>
Wind over Peak	<b>864 MW</b>
Wind Record 10/07/11	<b>7,400 MW</b>
Max Wind Value	<b>3,416 MW</b>
Wind Peak Time	<b>06:08</b>
Wind Integration %	<b>10.17%</b>

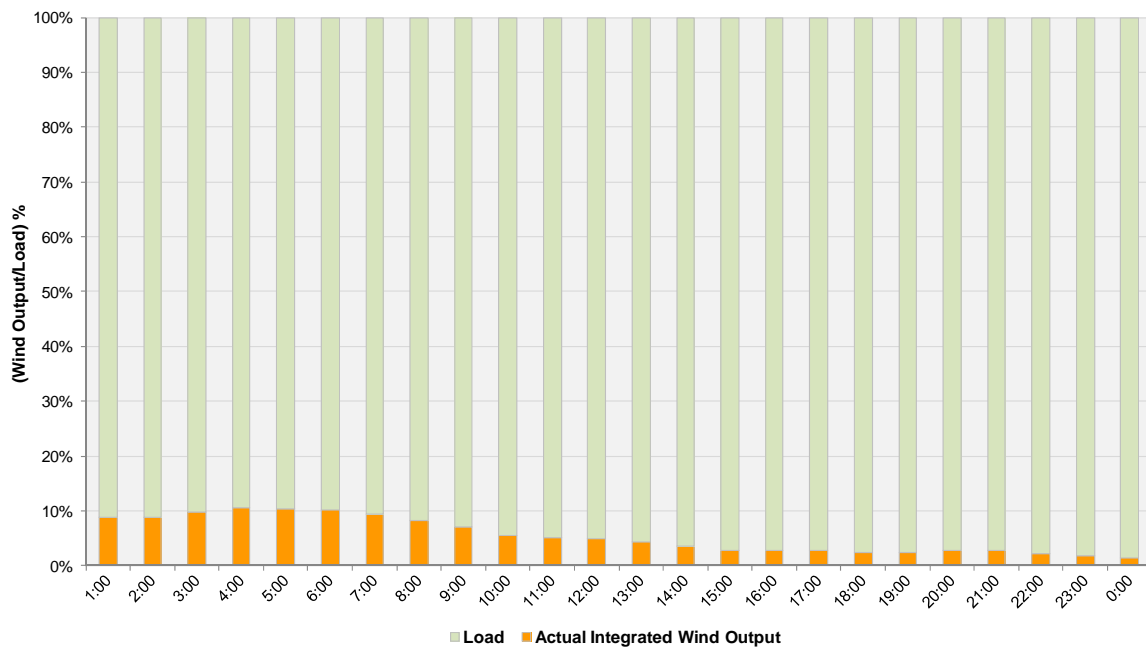
**Hourly Average Actual Load vs. Actual Wind Output  
12-16-2011**



**Actual Wind Output as a Percentage of the Total Installed Wind Capacity**  
**12-16-2011**



**Actual Wind Output as a Percentage of the ERCOT Load**  
**12-16-2011**



**ERCOT Load vs. Actual Wind Output 12/9/2011 - 12/16/2011**